

## nFront Password Filter™ Multiple Policy Edition

### Protecting the Integrity of Your Network

nFront Password Filter is designed to seamlessly protect your network by forcing sensible passwords. nFront Password Filter prevents weak passwords and gives you the ability to enforce strong passwords using a solution that is integrated at the Windows 2000 / Windows 2003 domain level.

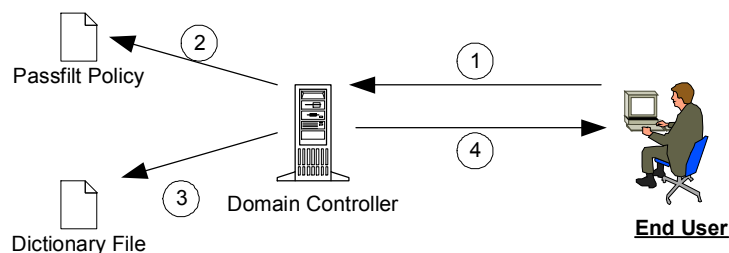
nFront Password Filter offers a very flexible configuration to enforce almost any password criteria imaginable. Furthermore, it includes a dictionary password check. The dictionary used by NFront Password Filter is a plain text file and 100% customizable. Now you can stay one step of hackers and load the dictionary files used by their password crackers. This leaves only a brute force attack and forces hackers to seek easier prey. The days of periodically running password crackers and scanning for poorly chosen passwords are over when you implement NFront Password Filter.

### Multiple Policies to Protect High Risk Accounts

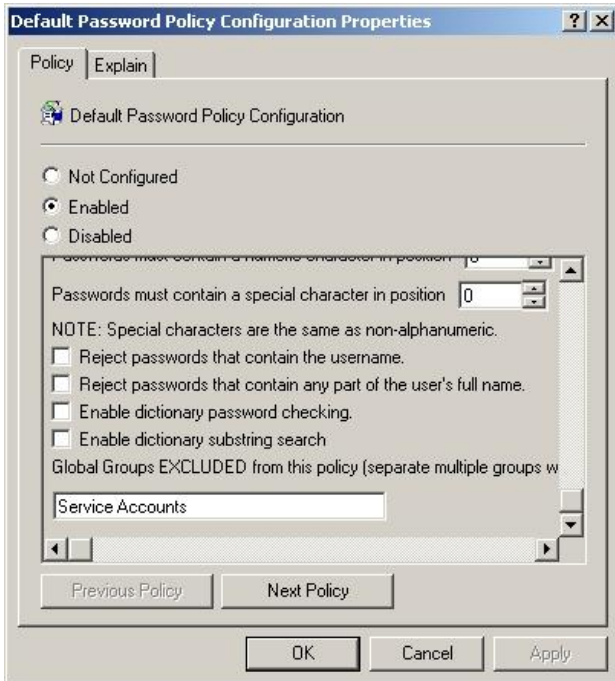
Has an external auditor ever cracked the password to an administrator's account? How about someone in the Finance department or one of the Executives? NFront Password Filter MPE gives you the flexibility to establish multiple password policies with different restrictions for different global and universal security groups. Now you can make sure wireless users, administrators and executives use sensible passwords that cannot be cracked by many of the common dictionary password crackers.

### How It Works

NFront Password Filter is a package that you load on all of your Windows 2000 or Windows 2003 domain controllers. All password changes for domain user accounts must go through the password filter DLL. Once loaded, there is no way around the DLL.



1. User submits password change.
2. LSA calls Passfilt Pro. Passfilt Pro consults password policy.
3. Passfilt Pro may check dictionary.
4. Passfilt Pro tells LSA if password is acceptable. Password accepted or rejected.



nFront Password Filter Group Policy



Optional password change client which integrates with Windows

### Advantages

- Easy to deploy and maintain.
- Works with Windows 2000 and Windows 2003 R2
- Works with x64 Windows 2003 servers
- Controlled by a Group Policy in Windows 2000 and Windows 2003.
- Secure code. No fancy wizards to guide you through your password policy. No buggy VB front ends with memory leaks to set your policies; Just clean, simple code controlled by the Windows 2000 / 2003 registry.
- Performance. NFront Password Filter can process a 250,000-word dictionary in 200 milliseconds. In less than 1/5 second, you are assured your password does not match one-quarter million possible common passwords!
- No SPOF [Single Point of Failure]. No network API calls leave the local DC ensuring that you never skip password filtering due to an unavailable password policy server!
- Optional client which can inform users of password policy rules and provide exact reasons why a password change was rejected.

### Features

- Easy to deploy and maintain.
- Simple and secure code.
- Very fast dictionary check.

### Learn More

Visit <http://www.nFrontSecurity.com> to learn more about NFront Password Filter and password hacking.

### 5 minute demo / evaluation

View the 5 minute demo online. In 5 minutes see the installation and configuration of 2 password policies. You can download a 100% operational evaluation copy at <http://www.nFrontSecurity..>